

AXI LG-X SERIES

INTERNATIONAL

INLINE MAGNETIC FUEL CONDITIONER

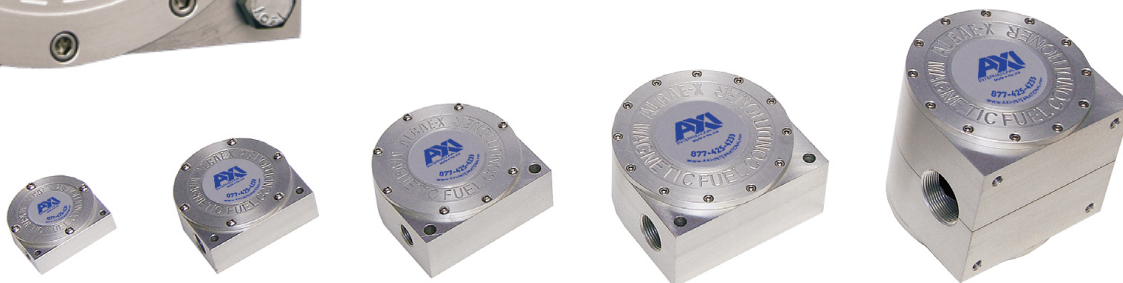
AXI's patented Magnetic Fuel Conditioners stabilize and condition fuels by reducing the size and mass of clusters of fuel molecules. In combination with fine filters / water separators, fuel conditioners prevent fuel degradation. Adding an LG-X inline fuel conditioner between the engine's primary filter and fuel tank will improve combustion, ensure peak turbo performance, decrease exhaust temperature, improve fuel economy, lower emissions, and extend filter, injector, and engine life.



LG-X INLINE FUEL CONDITIONER:

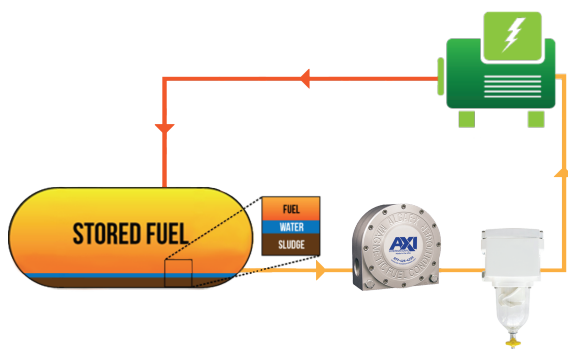
- Patented Innovative Design
- CNC Machined 6061 Anodized Aluminum Construction
- NPT or BSP Threading
- Viton O-rings
- Access Plate for Inspection and Maintenance

Diesel, biofuels, kerosene, gasoline, hydraulic fluid, and oil are inherently unstable organic hydrocarbon fluids that naturally break down. The resulting sediments, acids and tank sludge clog filter elements and corrode injection systems.



LG-X SERIES 200 500 1500 3000 4000/5000

Port Size (NPT / BSP)	1/4"	1/2"	3/4"	1"	1-1/2" / 2"
Max Flow Rate (On Engine)	1-25 GPH (3.8-95 LPH)	20-110 GPH (76-416 LPH)	50-350 GPH (189-1325 LPH)	200-800 GPH (757-3028 LPH)	1500 / 2500 GPH (5678 / 9464 LPH)
Weight	1lb (0.45kg)	2lb (0.9kg)	3.5lb (1.6kg)	7.5lb (3.4kg)	27 / 35lb (12 / 16kg)
HP Range	Up to 200 HP (Up to 149 kW)	Up to 500 HP (Up to 373 kW)	Up to 1500 HP (UP to 1118.5 kW)	Up to 3000 HP (Up to 2237.1 kW)	3000 HP (and up) (2237.1 kW and up)



1.239.690.9589
1.877.425.4239 Toll Free
www.AXI-International.com

f AXI.International

t AXInternational

AXIFuel

AXIFuel